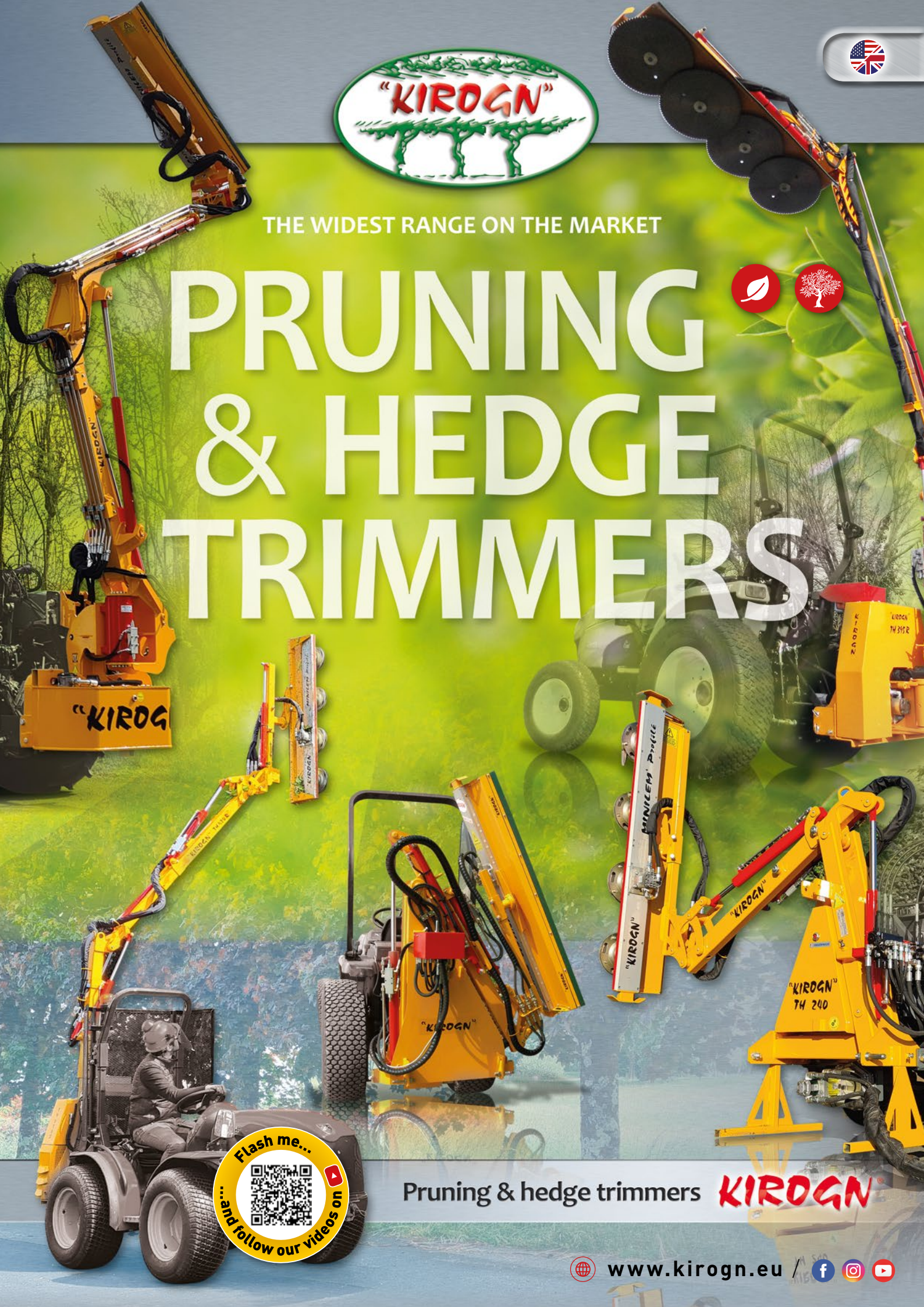




THE WIDEST RANGE ON THE MARKET

PRUNING & HEDGE TRIMMERS



Pruning & hedge trimmers **KIROGN**



www.kirogn.eu



"KIROGN"[®] TH 550 R



HIGH PERFORMANCE: Equipped with rotary cylinders, the TH 550 R offers a large amplitude of motions.

Recommended weight for loader: 2 200 kg minimum



SPECIFICATIONS: TH 550 R

Thanks to its technology and remarkable kinematic, the **KIROGN[®] TH 550 R** respond to requirement of mechanical cut professionals.

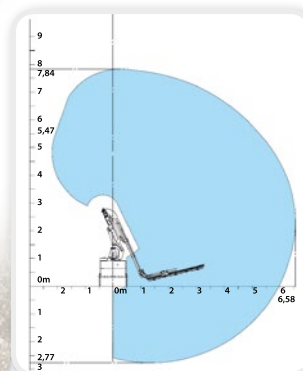


Proportional electric central with visualisation screen.



ADVANTAGES: TH 550 R

- **Strong and compact frame.**
- **2nd telescopic arm**
- Slack adjustment pad.
- **Reversibility:** to the left or to the right with hydraulic pivot.
- Electro-hydraulic compensation parallelogram.
- **270° sweeping with gradual movement** from right to left with its high precision rotary cylinder.
- Spreader beam's rotation to 270°.
- Power pack with cooler.
- **Immersed triple pump.**
- Proportional electric control of **hydraulic movement by single lever.**
- **Operations panel with visualisation screen.**
- Automatic level control with tilt sensor (vertical/horizontal)
- Hydraulic shift of the cutting element.
- Double direction spinning.
- **Cutting element and options: see sheet "KIROGN[®] TH 240 R".**



TECHNICAL FEATURES

Indicative weight of equipment	700 kg
Minimum weight of the loader	2 200 kg
Maximum height for horizontal cut	5,50 m
Maximum height for vertical cut	8,40 m
Hydraulic supply	With independent power pack
Reversibility right / left	Yes

"KIROGN"[®] / 4, route de Montendre - 17500 VILLEXAVIER - FRANCE

(+33) 5 46 48 08 57 / info@kirogn.eu / www.kirogn.eu / f i y